



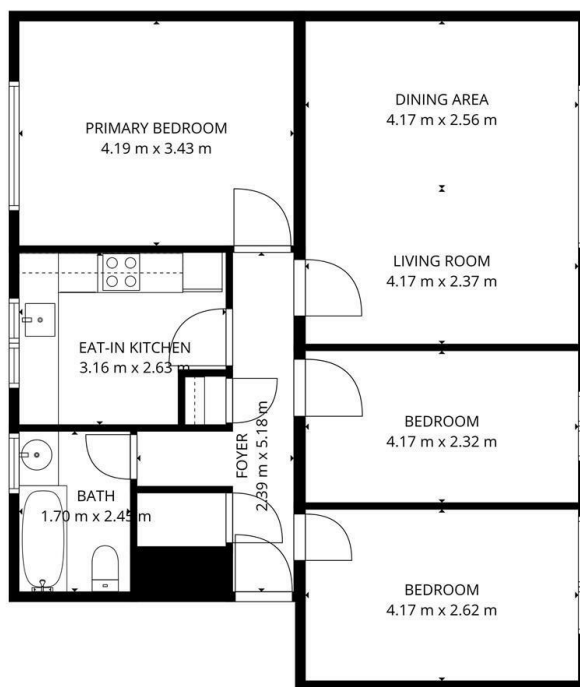
PERFECT PILLARS
Supporting You



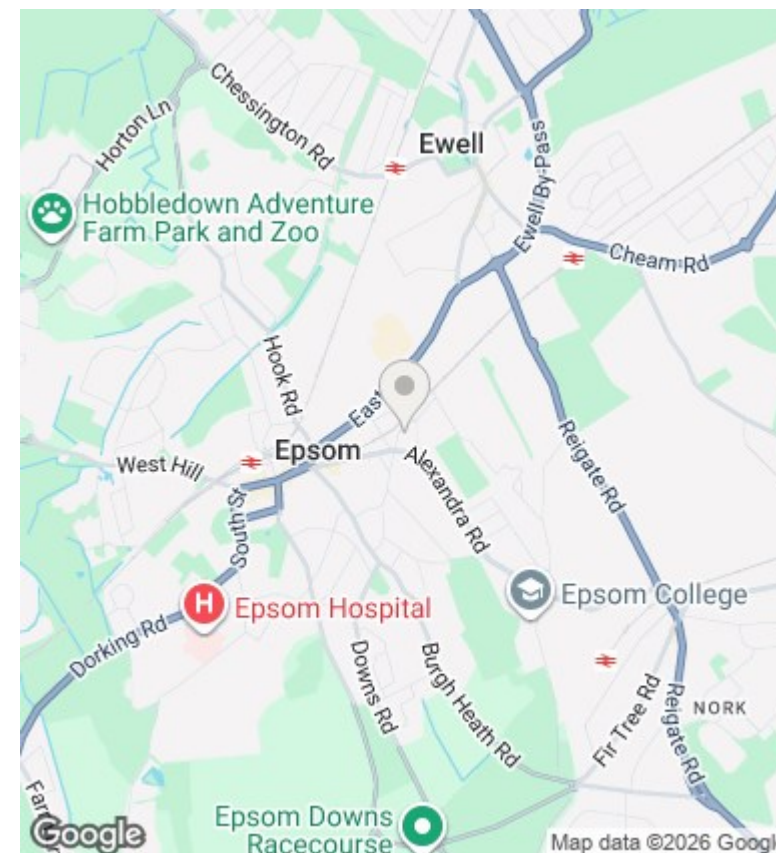
25 Cleves Court Mill Road, Epsom, KT17 4AQ

Asking price £370,000

- Spacious three bedroom first floor apartment
- Separate eat in kitchen with breakfast space
- Short walk to Epsom Station and town centre
- Impressive EPC B energy rating
- Central entrance hallway with storage potential
- Rapid rail links to London Waterloo and Victoria
- Generous open plan living and dining area
- Long lease with over 150 years remaining
- Close to outstanding local schools



TOTAL: 80 m²
FLOOR 1: 80 m²
EXCLUDED AREAS: WALLS: 6 m²



Directions

Viewings

Viewings by arrangement only. Call 01183 048821 to make an appointment.

Council Tax Band

C

EPC Rating:

B

| Energy Efficiency Rating | | |
|---|-------------------------|-----------|
| | Current | Potential |
| Very energy efficient - lower running costs | | |
| (92 plus) A | | |
| (81-91) B | 81 | 81 |
| (69-80) C | | |
| (55-68) D | | |
| (39-54) E | | |
| (21-38) F | | |
| (1-20) G | | |
| Not energy efficient - higher running costs | | |
| England & Wales | EU Directive 2002/91/EC | |